

## DESCRIPTION

### COMPLETE CONTROL AT YOUR FINGERTIPS

- KAMELEON SOFTWARE'S OPERATING SYSTEM RUNS UNDER WINDOWS 9X/2000/XP OR NT 4.0 ENVIRONMENTS
- IT CAN EASILY RUN SIMULTANEOUSLY ON MULTIPLE PLATFORMS IN A CLIENT/SERVER FASHION
- ITS GRAPHIC INTERFACE IS SIMPLE AND INTUITIVE MAKING IT EASY TO CONFIGURE, PROGRAM AND OPERATE

## SPECIFICATIONS

### SYSTEM PROGRAMMING

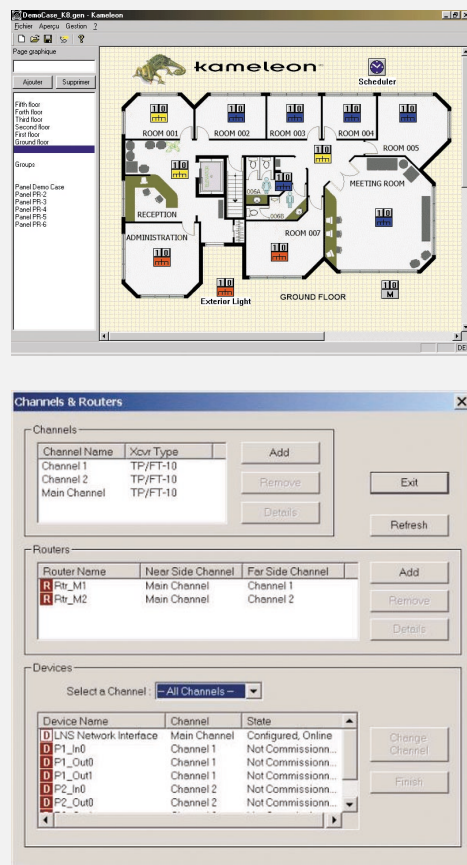
- GROUPS CONFIGURATION
- ZONES DEFINITION
- SWITCH(ES)-RELAY(S) LINKS CONFIGURATION
- SCHEDULES DEFINITION FOR EACH GROUP OR ZONE
- 4 LEVELS OF PASSWORD

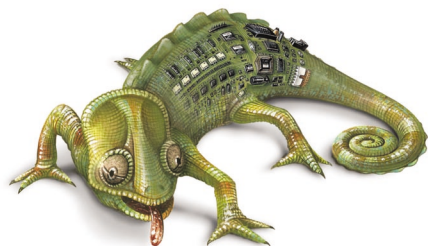
### SYSTEM CONFIGURATION

- BOARD MANAGEMENT: ADDITION OF THE BOARDS, OPERATION DIAGNOSTICS OF EACH BOARD, EASY REPLACEMENT
- NETWORK MANAGEMENT:
  - MULTIPLE CHANNELS TO EXTEND THE NETWORK
  - USAGE OF DIFFERENT COMMUNICATION MEDIA (TWISTED PAIR, POWER LINE, TCP/IP)

### SYSTEM OPERATION

- GENERAL SYSTEM ARCHITECTURE MONITORING
- OVERRIDE CAPABILITY BY SINGLE MOUSE-CLICK
- RESCHEDULING CAPABILITY
- INDIVIDUAL LIGHTING CIRCUITS, GROUPS OR ZONES REAL-TIME STATUS VIEW





## SPECIFICATIONS

### SCHEDULER

- MANY SCHEDULE TYPES AVAILABLE:  
DAILY, WEEKLY, MONTHLY, ONE-TIME EVENT.
- PROGRAMMING OF A DELAYED OPERATING SCHEDULE.  
(I.E.) A SPECIAL SCHEDULE FOR THE SUMMER PERIOD  
CAN BE PROGRAMMED IN ADVANCE.
- ABILITY TO PROGRAM EVENTS ACCORDING  
TO SUNRISE AND SUNSET TIMES.
- COMPLETE FLEXIBILITY IN SCHEDULE PROGRAMMING;  
DAY OF THE WEEK, WEEK WITHIN  
A MONTH, FIRST MONDAY OF SEPTEMBER ETC...

### DATA LOGGER

- RECORD OF CHRONOLOGICAL SEQUENCE OF EVENTS
- COMPILATION OF OPERATING HOURS
- PRE-DEFINED REPORTS GENERATOR
- GATHERED INFORMATION COULD BE USED  
TO EVALUATE LIFE EXPECTANCY OF BULBS OR GENERATE  
ELECTRICITY BILLS FOR LIGHTING USE OUTSIDE  
REGULAR BUSINESS HOURS BY TENANTS.

### ADVANCED FUNCTIONS

KAMELEON SOFTWARE ALSO OFFERS

THESE IMPORTANT PROGRAMMING OPTIONS:

- DIMMING (SCENE CONTROL, FADE AND DELAY OPTIONS)
- SCHEDULE WITH FLICK WARNING
- SCHEDULE EXTENSION DELAY
- START-UP OR SHUT-DOWN DELAY
- ENABLING EVENTS
- EXCLUSION OF DEVICES (SWITCH, SENSOR, ...)
- MAINTENANCE/CLEANING FUNCTION
- ETC...

